

Tender specification:

Oventrop bronze piston type spring assisted check valves PN 25, both ports female thread according to EN 10226 or DIN ISO 228.

Body made of bronze, inner parts made of brass, valve disc with EPDM seal, stem seal with O-ring made of EPDM.
Materials suitable for potable water.

Technical data:

Max. operating pressure p_s : 25 bar (PN 25)

Operating temperature t_s : -10 °C (up to +150 °C)

Function:

Oventrop piston type spring assisted check valves are suitable for horizontal and vertical installation in the pipework. The valve disc is spring assisted with an opening pressure of 40 mbar (400 mm WG).

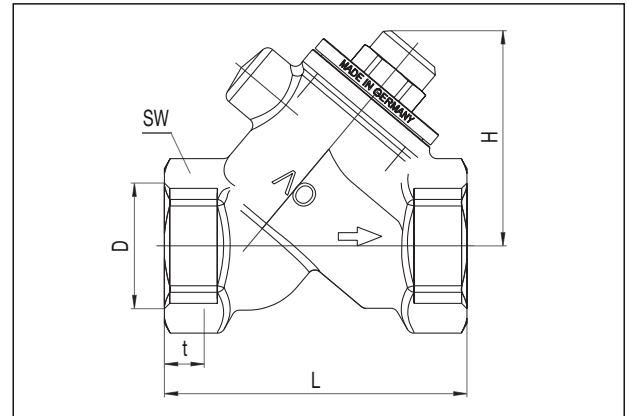
Piston type spring assisted check valves are not suitable for use on pulsating flow and must be installed with a minimum of 10 D (10 x nominal pipe diameter) of straight pipe behind the pump.

Application:

Central heating and cooling systems. Suitable for water and water and glycol mixtures.

Copper pipes (according to DIN EN 1057) can be connected to the DN 15 and DN 20 female thread with suitable "Ofix" compression fittings (use reinforcing sleeves!).

| Size | k_{vs} value | Item no. |
|-------|----------------|----------|
| DN 10 | 3.4 | 1072103 |
| DN 15 | 5.5 | 1072104 |
| DN 20 | 10.3 | 1072106 |
| DN 25 | 17.5 | 1072108 |
| DN 32 | 33.0 | 1072110 |
| DN 40 | 44.0 | 1072112 |
| DN 50 | 68.0 | 1072116 |



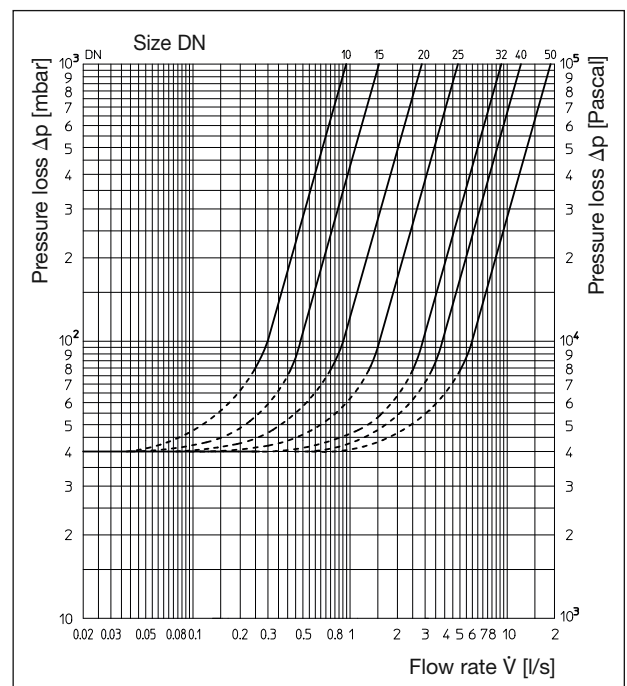
| DN | D* | L | H | t | SW** |
|----|---------|------|----|------|------|
| 10 | Rp 3/8 | 63.5 | 41 | 10.1 | 22 |
| 15 | Rp 1/2 | 66 | 41 | 13.2 | 27 |
| 20 | Rp 3/4 | 75 | 44 | 14.5 | 32 |
| 25 | G 1 | 80 | 57 | 10.5 | 41 |
| 32 | G 1 1/4 | 97 | 67 | 12.5 | 50 |
| 40 | G 1 1/2 | 107 | 80 | 14.5 | 55 |
| 50 | G 2 | 124 | 90 | 16.5 | 68 |

Dimensions

* Rp according to EN 10226

* G according to DIN ISO 228

** SW = spanner size



Flow chart

OVENTROP GmbH & Co. KG
Paul-Oventrop-Straße 1
D-59939 Olsberg, Germany
Phone +49 (0)29 62 82-0
Fax +49 (0)29 62 82-450
E-Mail mail@oventrop.de
Internet www.oventrop.de

For an overview of our global presence
visit www.oventrop.de.

Subject to technical modification without notice.

Product range 5
ti 266-EN/10/MW
Edition 2015